



AHTW-2D-300-400-H

ANCHOR HANDLING TOWING WINCH

SPECIFICATION

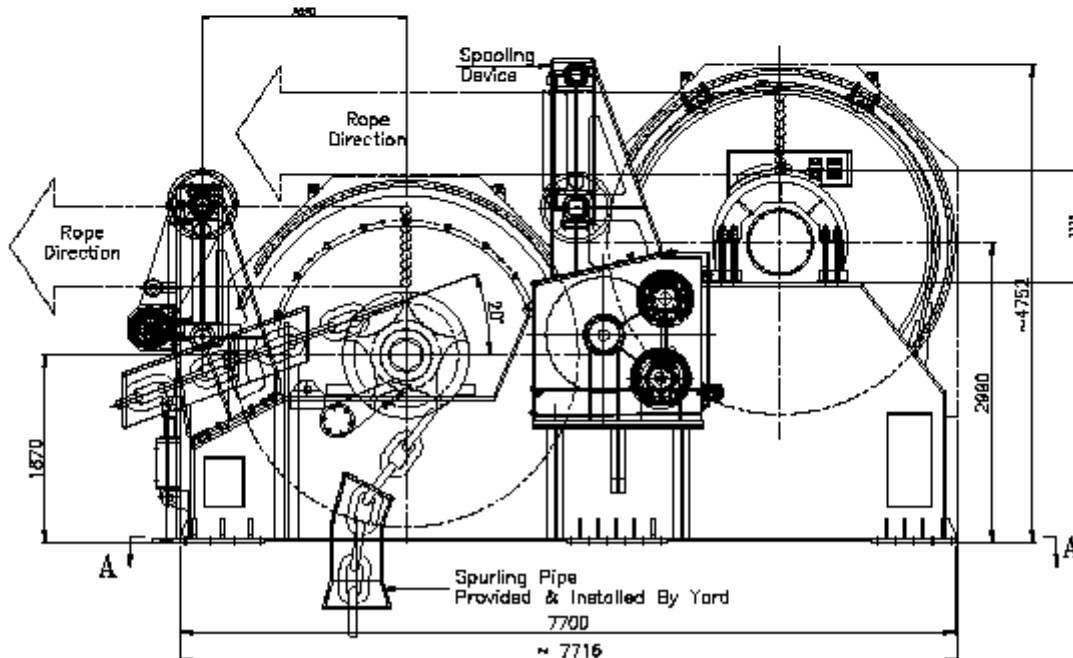
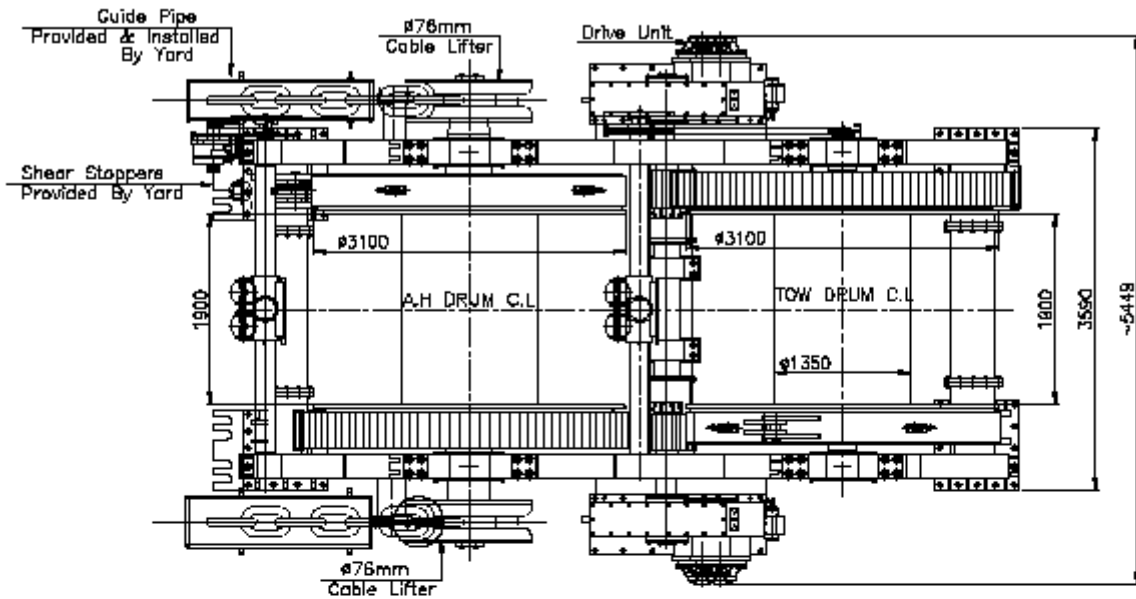
EITHER UPPER DRUM OR LOWER DRUM

Drum Capacity	: 1200m x Φ 90mm S.W.R (9 layers)
Duty Pull	: 300T x 0~6m/min
(1st layer)	: 200T x 0~8m/min
	: 130T x 0~12m/min
	: 60T x 0~23.5m/min
Dynamic Braking	: 60~300T x 0~35m/min (1st layer)
Brake Holding	: 400T (static @ 1st layer)
Brake Assembly	: Hydraulic operated c/w manual override, hand pump for "dead ship"
Clutch Assembly	: Hydraulic operated jaw clutch
Control	: Local control manifold onto winch
	: Remote control panel in wheelhouse



AHTW-2D-300-400-H

ANCHOR HANDLING TOWING WINCH



Landscape City, 5-1-302, The forth street TEDA, TianJin, China 300457 天津开发区第四大街伴景湾家园 5-1-302

Tel 电话 : 86-22-66372115

Fax 传真 : 86-22-66372117

Linkman 联系人 : 韩大为

Email 电邮 : han@sinolinker.net